



Castles

ASKING PRICE

£285,000

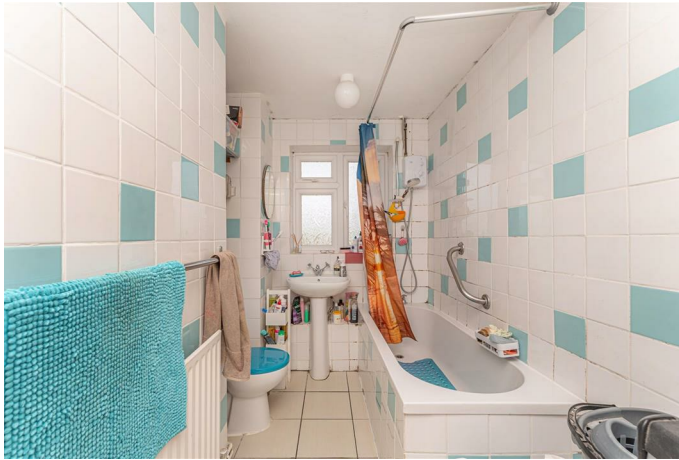
Tottenham Road

Palmers Green, N13 6DJ

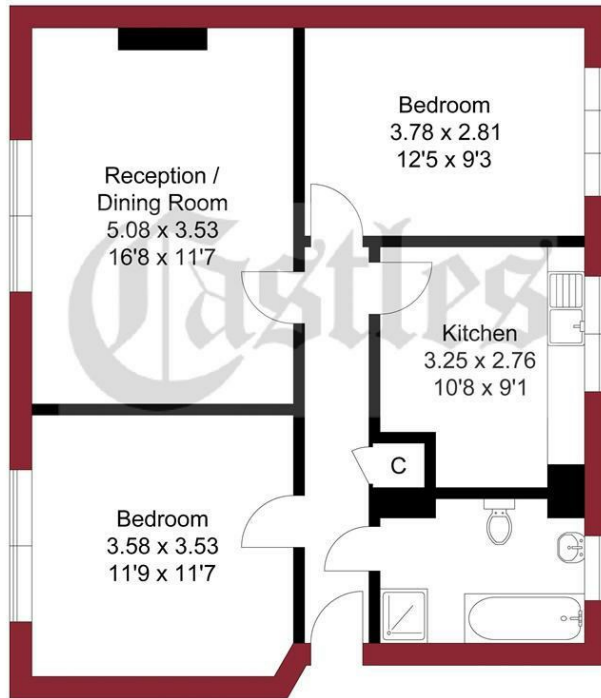
PROPERTY SUMMARY

A well proportioned two double bedroom flat, arranged on the first floor of this low rise purpose built block. Accommodation further comprises; bright reception, separate fitted kitchen and ample storage space. Outside: there are communal gardens to front and rear and the benefit of own secure storage shed. Ideally positioned within close proximity to the popular Green Lanes, shops, bars and restaurants. Palmers Green Overground Station is only 1.1 (approx) miles away and Wood Green Station (approx) 1.5 miles.





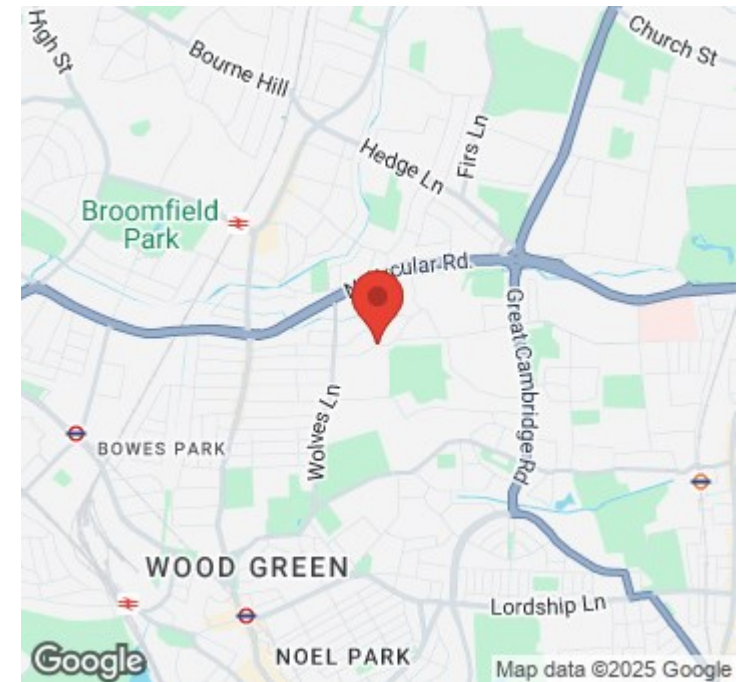
APPROXIMATE GROSS INTERNAL AREA
63.52 sqm / 683.72 sqft



FIRST FLOOR

THIS PLAN IS FOR ILLUSTRATION ONLY AND MAY NOT BE
REPRESENTATIVE OF THE PROPERTY

For a guide to the area
please scan this code for
more information



Flat - First Floor

Leasehold

Council:

Council Tax Band: C

Lease Remaining: n/a

Service Charge: n/a

Ground Rent: n/a

Agents Note: Whilst every care has been taken to prepare these particulars, they are for guidance purposes only. All measurements are approximate and are for general guidance purposes only and whilst every care has been taken to ensure their accuracy, they should not be relied upon and potential buyers/tenants are advised to recheck the measurements



OFFICE ADDRESS

78 Green Lanes
Palmers Green
London
N13 6BE

OFFICE DETAILS

020 8888 6081

www.castles.london

